

SSH Overview

The **SSH** option allows you to manage secure telnet access to your account. Much of the functionality of telneting is handled through the File Manager option in the Control Panel. However, there are instances when telneting (outside the operation of the File Manager) is required to get the job done.

The only way to gain telnet access to your account is by using SSH secure telnet software that must be loaded on your computer. The recommended software is Van Dyke Technologies' **Secure CRT**. The website for this software is: <http://www.vandyke.com/products/securecrt/index.html>.

The SSH Option allows you to upload the RSA (Rivest, Shamir, Adleman) key generated on your computer by the SSH software to the server on which your site resides. Once completed, you will have secure telnet access to the site.



Note:

- You must be set up for SSH access to your account. If you are not and you use the SSH option from the Control Panel, the following message will display when the SSH Manager opens.

SSH Manager

You are not set up for SSH.

In order to receive permission to run SSH for access to the machine, please fax or street mail a copy of your driver's license, passport or other photo id to Customer Service

Once we receive this information, we will enable you to set up SSH at which time you will be able to install your SSH key

Once your hosting company has given you approval (using whatever criteria they deem necessary) to use a secure telnet connection to the server, you will be able to use the SSH Manager to set up your public (RSA) key on the server.

The SSH Manager



How To Use the SSH Manager:

1. From the Control Panel select the **SSH** icon. The **SSH Manager** appears.

SSH Manager

The SSH Manager will help you to setup SSH access to your domain. Follow the steps provided below to setup SSH access:

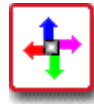
- 1) Create your RSA key. Your software will have directions on how to do this.
- 2) Input your key in the area below.
- 3) Submit your key.
- 4) Now log into **user.com** using your RSA identity. Be sure to choose RSA as the method of authentication.

Please input your RSA key here (should be in a file called something like identity.pub):
Be sure not to change anything when you copy the key, if anything is changed, your key will not work.

Press this button to

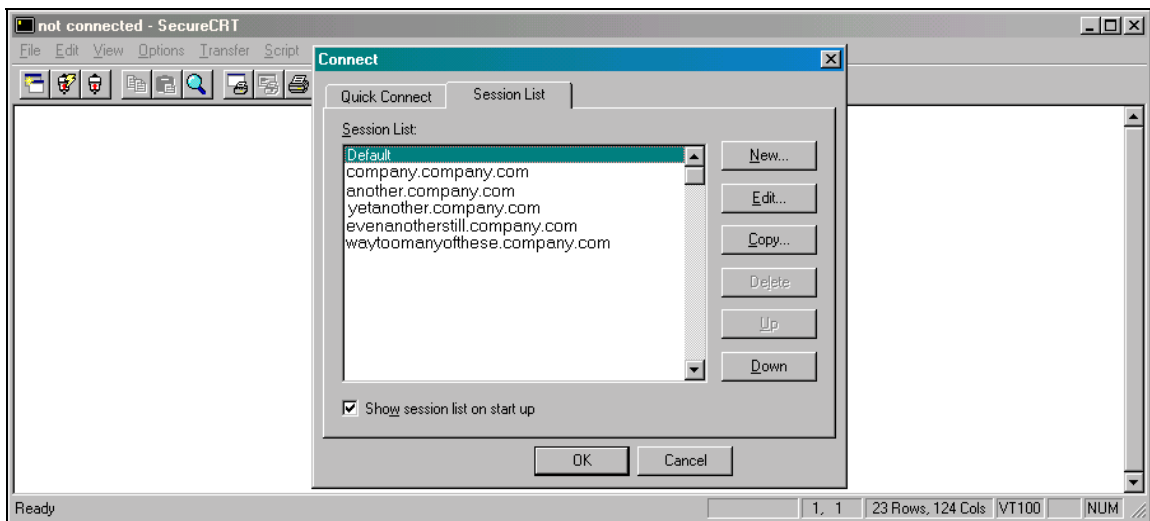
2. As illustrated above, the SSH Manager provides step-by-step instructions for transferring your public key to the server. The first step in this procedure is this: **Create your RSA key. Your software will have directions on how to do this.** The next procedure in this document shows, step-by-step, how to create this RSA key using the Secure CRT software.

Creating an RSA (Public) Key

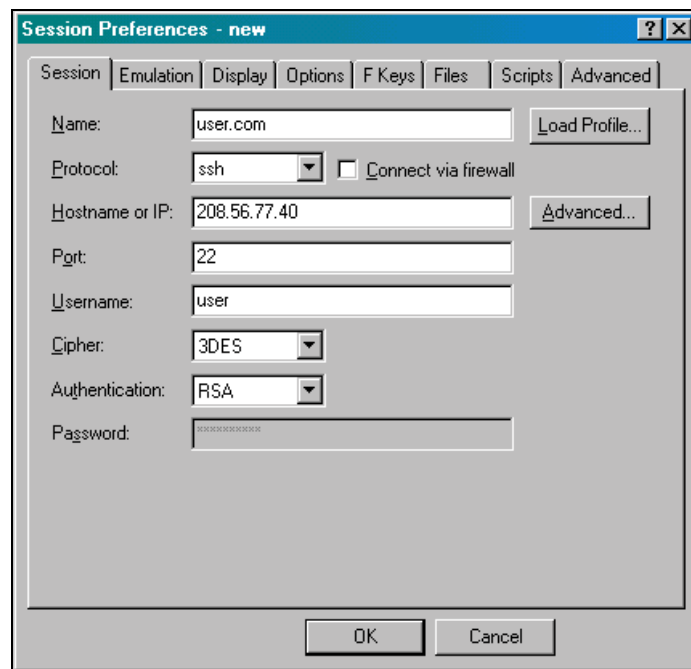


How To Create an RSA Key with Secure CRT:

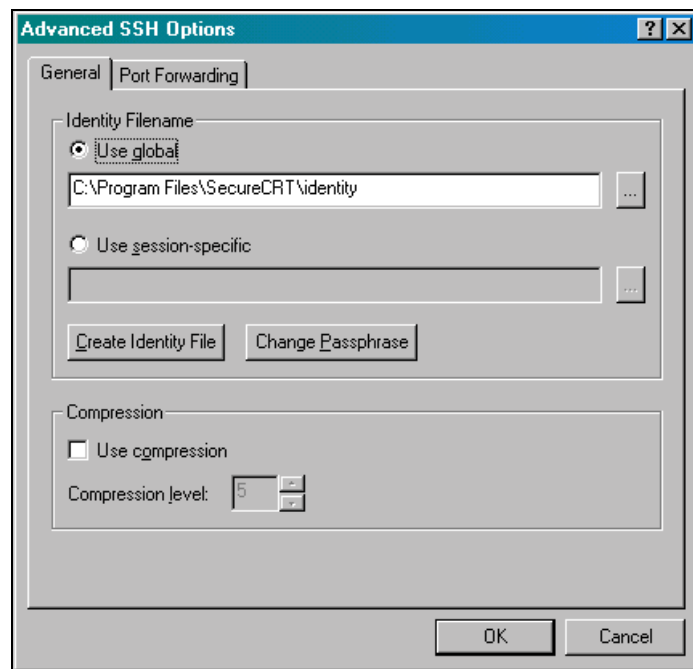
1. Launch the Secure CRT application. The application displays typically with the **Connect** dialog box open to the **Session List** tab.



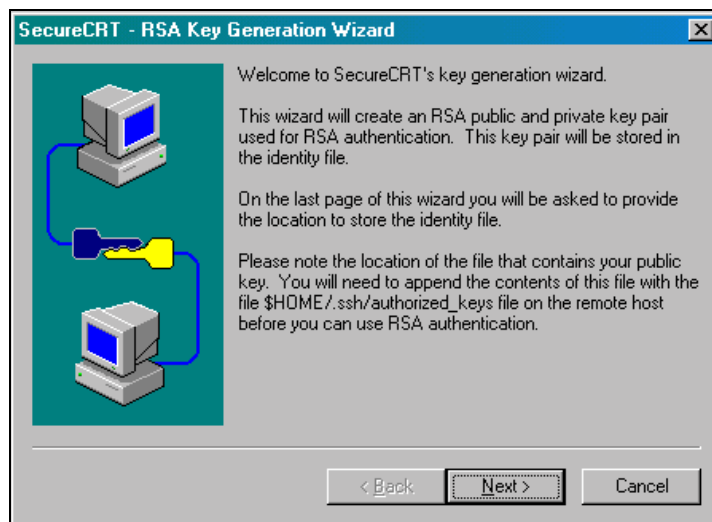
2. Select the **New** button to create a new session. The **Session Preferences – new** dialog box displays.



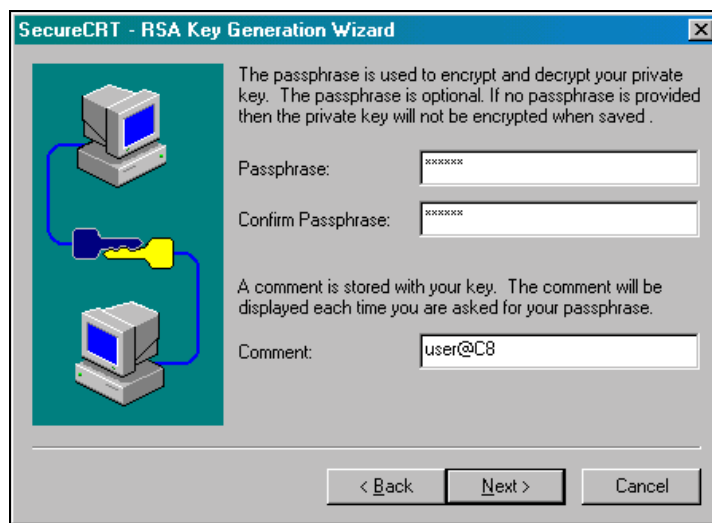
3. In the **Name** field, enter name of the session you are creating.
4. In the **Protocol** field, select **ssh** from the drop-down list.
5. In the **Hostname or IP** field, enter your domain name or the IP number for your domain.
6. Complete the rest of the fields on this screen with the appropriate information. Make sure to enter your domain user name in the **Username** field and to select **RSA** from the **Authentication** field's drop-down list.
7. Select the **Advanced** button. The **Advanced SSH Options** dialog box displays.



8. On the **General** tab, select the **Create Identity File** button from the **Identity Filename** section of the dialog box. The **SecureCRT – RSA Key Generation Wizard** displays.

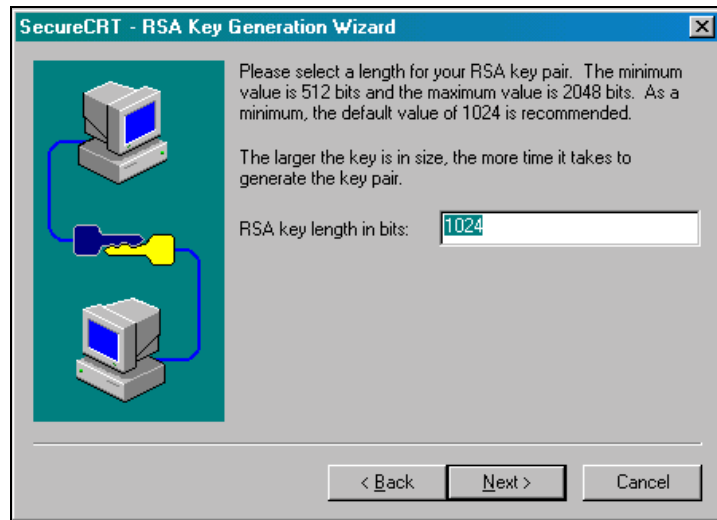


9. Click on the **Next >** button to proceed with the next step of the Wizard.

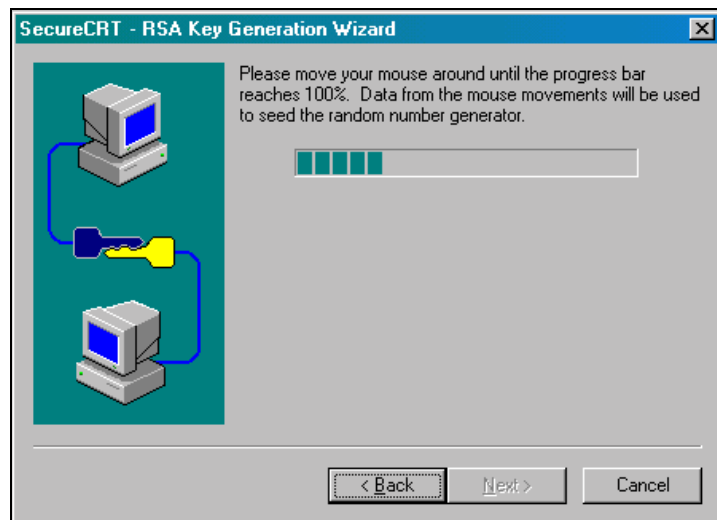


10. If you wish to use a passphrase as an added layer of security, enter the passphrase in the **Passphrase** and **Confirm Passphrase** fields. Be sure to enter it into both fields in exactly the same way. Don't forget to your passphrase handy. You will need it when establishing a connection to the server.
11. In the **Comment** field, either accept the default value or enter a new one. The comment will be your way of knowing when the application is prompting you for your passphrase.

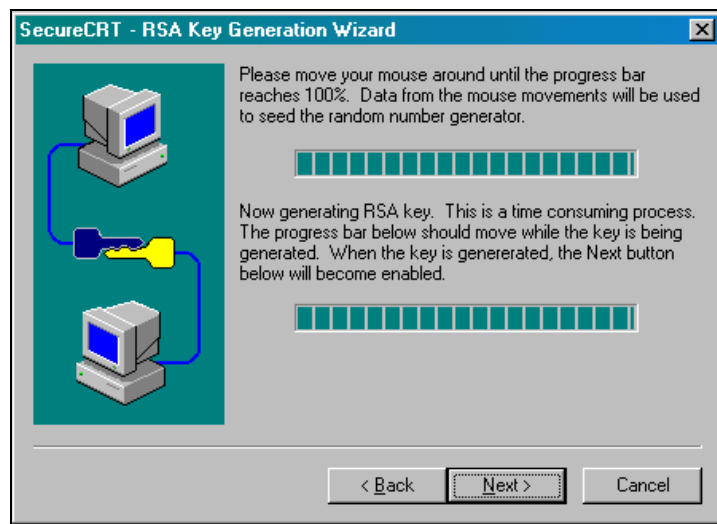
- Click on the Next > button to proceed to the next step. (Note: the < Back button can be used throughout this wizard to move back to the previous step and make changes if necessary.)



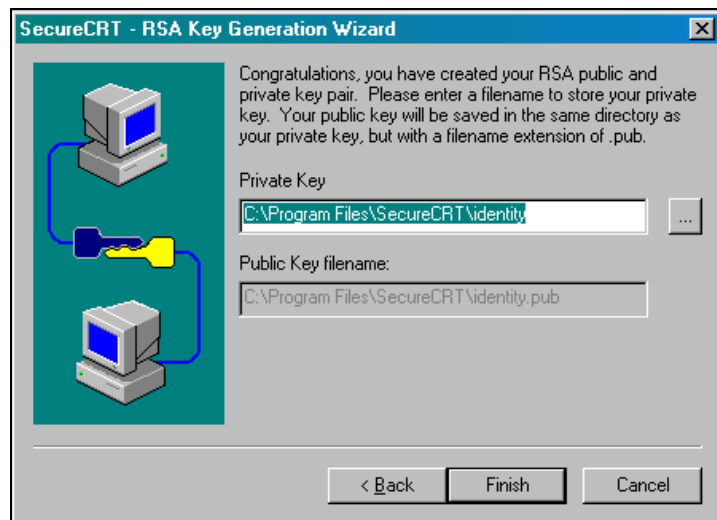
- You need to determine the length of your RSA key pair needs to be determined. It is recommended that you choose a value between **1024** and **2048** bits. 2048 bits is the maximum and will generate the most secure key, but it takes longer to generate a key of this size. 512 bits is the absolute minimum and is not recommended. Once you have entered a number, select **Next >** to proceed.



- As the instructions in the wizard indicate, you need to move your mouse around on the screen for the application to generate the key. The application uses a complex set of formulas to create the key out of a mathematical interpretation of your mouse's movements. When you have moved your mouse around sufficiently, the screen automatically changes and the key pair is generated. This is shown in the image below. You do not need to move your mouse around for this second part of the step.



- When both progress bars are "full", the **Next>** button becomes enabled. Select it to proceed.



16. Select the folder on your hard drive in which to store the key. You can accept the default, which is usually the **identity** sub-folder of the **SecureCRT** folder, located wherever you installed the application originally.
17. To complete the wizard, select the **Finish** button. The **Advanced SSH Options** dialog box reappears.
18. From there, select the **OK** button to close the dialog box. The **Session Preferences – new** dialog box reappears.
19. Select **OK** to apply the changes and end the procedure. Your newly created session will now appear at the bottom of the **Session List**.



Warning:

- At this point you **cannot** yet connect to the server using Secure CRT. First, you must place the RSA key on the server using the SSH Manager in the Control Panel. This is explained in the next section.

Placing the RSA Key on the Server with SSH Manager



How To Place the RSA Key on the Server:

1. (If you left the SSH Manager open from earlier sections in this manual, you may skip this step.) From the Control Panel, select the **SSH** icon. Once again, the **SSH Manager** displays.

SSH Manager

The SSH Manager will help you to setup SSH access to your domain. Follow the steps provided below to setup SSH access:

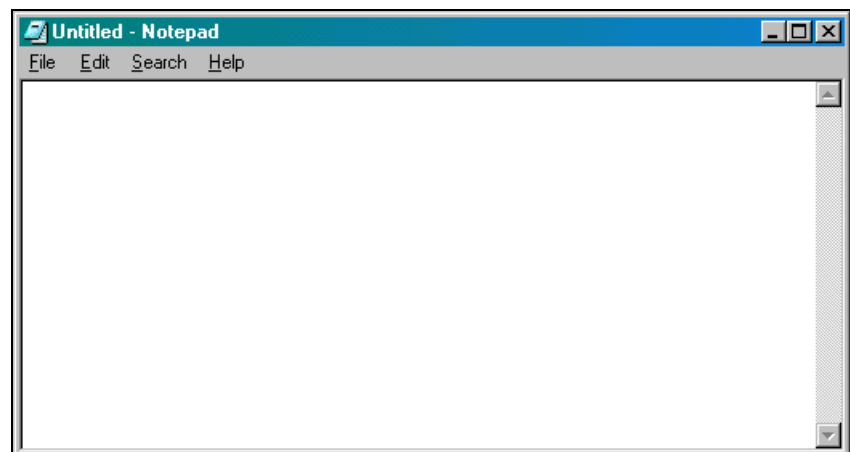
- 1) Create your RSA key. Your software will have directions on how to do this.
- 2) Input your key in the area below.
- 3) Submit your key.
- 4) Now log into **user.com** using your RSA identity. Be sure to choose RSA as the method of authentication.

Please input your RSA key here (should be in a file called something like identity.pub):
Be sure not to change anything when you copy the key, if anything is changed, your key will not work.

Press this button to

Place your key in the text box that is provided in the SSH Manager and submit it. (To do this, you must open the key in another application, copy it, and then paste it into this text box.)

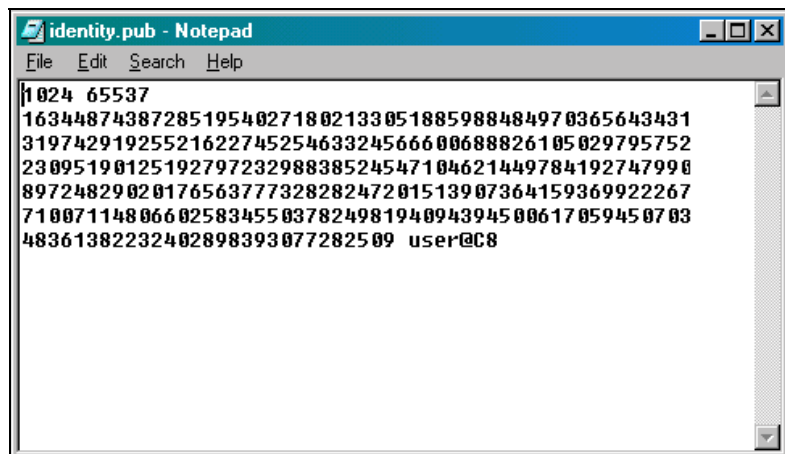
2. Launch any text-editor. On a Windows-based PC, **Notepad** will suffice. (This is available from the **Start** menu, under **Programs**, then **Accessories**.)



- From the Notepad File menu, select **Open**. The **Open** dialog box displays.



- Find the key file by switching the **Files of type** field to **All Files (*.*)**. Then, move through the directory structure to the location of your file, **identity.pub**. (The application stated where the file would be stored in the previous procedure.) When you located the file, double-click on it to open it in Notepad. (Note, the image below has been altered, so the key will not actually work.)



- Once the key is displayed in Notepad, highlight the entire key with your mouse. From the Edit menu, select **Copy**.

- Switch back to the **SSH Manager** and paste the key into the text box. You can do this by placing the cursor in the dialog box and either selecting **Edit** and then **Paste** from your browser's main menu or by using the key combination **[Ctrl] + [V]**. (Note: the image below has been altered. It is not a real key.)

Please input your RSA key here (should be in a file called something like identity.pub):
Be sure not to change anything when you copy the key, if anything is changed, your key will not work..

```
1024 65537
163448743872851954027180213305188598848497036564343186993197429
622745254633245666006888261050297957527748230951901251927972329
547104621449784192747990822889724829020176563777328282472015139
936992226792507100711480660258345503782498194094394500617059450
48361382232402898393077282509 user@CS
```

Press this button to

- Select the **Submit** button. A new screen displays.

SSH Manager

Your SSH public key has been placed on the server. Before log into your domain using SSH, please setup your access addresses.

Address 1:

Address 2:

Address 3:

[Back to SSH Manager](#)

- Enter the IP address for any computers from which you will be accessing the server. You can get this information from your ISP (Internet Service Provider). Or, if you are currently at the computer you will be regularly using, you can find the IP address by opening a DOS prompt and typing the command, **ipconfig**.

9. After you have entered a number in at least one of the spaces provided, click on the **Next** button. A new screen displays.

SSH Manager

Are you sure your access this server from the following addresses
208.56.0.12

If you confirm, please click this button to submit:

[Back to SSH Manager](#)

10. Make sure that the IP address listed is correct. Then select the **Submit** button. A message appears indicating that you will be able to access the server, via your SSH software (Secure CRT), from one of the addresses you listed within the next ten minutes.

Submit Access Address

Operation submitted to the server for processing
The operation will be completed within the next 10 minutes

Once these steps have been performed, use the Secure CRT software as usual to establish a connection to your site on the server. You will be prompted for your passphrase when the connection is made. Once the connection is made, Secure CRT works similarly to other telnet utilities.